

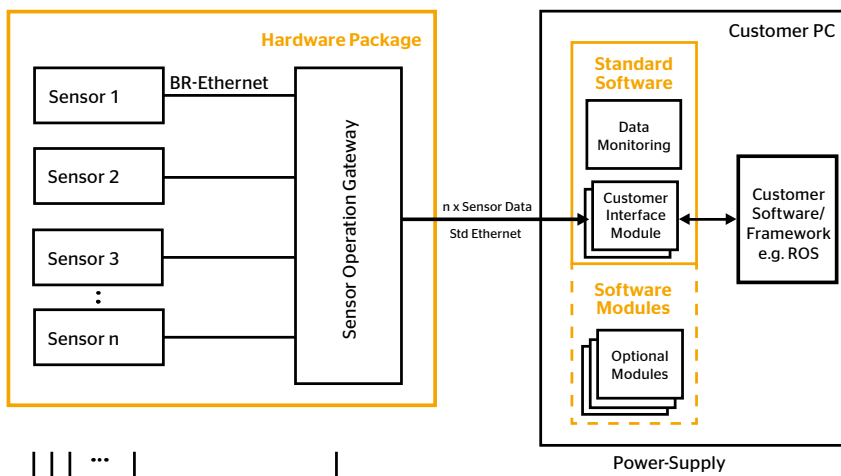
# Perception Development Kit (PDK)

## Featuring Continental ARS430 Long Range Radar Sensor

### Introduction

For automated driving functions, 360° sensor detection and central data fusion becomes inevitable. We offer a modular, off-the-shelf perception kit for evaluation and your development activities. A set of different hardware and software modules fit the kit for your individual application.

### System Overview



### PDK Hardware Base Packages

- › Radar Package
- › Camera Package
- › Radar + Camera Package

### PDK Software Content

- › Data Monitoring Module
- › Customer Interface Modules generic Module + ROS Node

### Optional PDK Software Modules

- › Object Tracking
- › Occupancy Grid
- › Free Space Extraction
- › Visualization Framework

# Perception Development Kit (PDK)

## Featuring Continental ARS430 Long Range Radar Sensor

The Perception Development Kit provides the complete detection level data of multiple Continental ARS430 Radar Sensors for your autonomous driving development. A ROS node as well as a generic customer interface enable an easy integration in your development tool chain. Optional Fisheye cameras and optional software modules provide building blocks for environmental perception and autonomous driving to speed up your development.

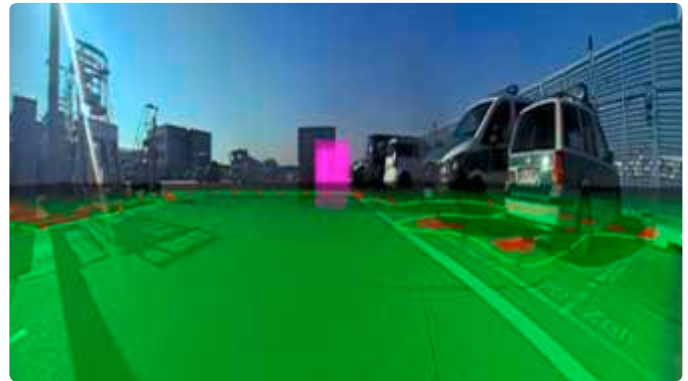
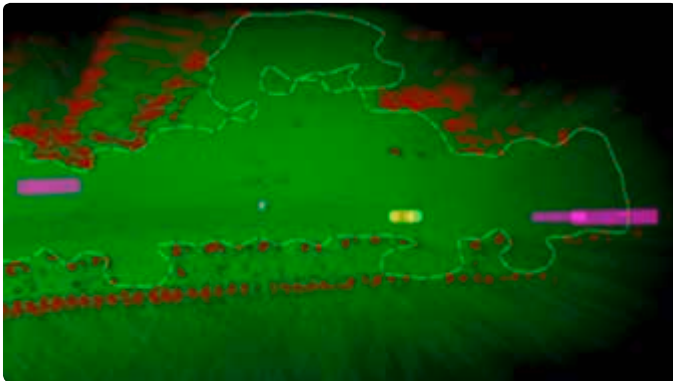
### PDK Content

- › Up to 8 ARS430 radar sensors (Continental 4th generation with 77Ghz technology)
- › Up to 4 Fisheye cameras
- › Integrated generic customer interface and data monitoring module
- › Optional Software Modules like Object Tracking, Occupancy Grid or Freespace Detection available

### Benefits

- › Access to radar detection level data and camera video stream via standard Ethernet connection
- › Time stamped data for easy synchronization
- › Fast implementation: no vehicle bus connection required
- › Supports different host environments, including Drive PX2

### Example application of optimal PDK software modules



#### Project Manager – Perception Products

##### Max Schürenberg

Phone: +49 (0)69 678 696 463

Mobile: +49 (0)151 188 732 91

E-Mail: max.schuerenberg@conti-engineering.com

#### Head of Driver Assistance Systems

##### Jürgen Schmitt

Phone: +49 (0)69 678 696 026

Mobile: +49 (0)160 907 149 29

E-Mail: juergen.schmitt@conti-engineering.com



#### Continental Engineering Services

Breitlacherstraße 94 • D-60489 Frankfurt/Main

Tel. +49 69 67 86 96 -0 • Fax +49 69 67 86 96 -070

[www.conti-engineering.com](http://www.conti-engineering.com)

